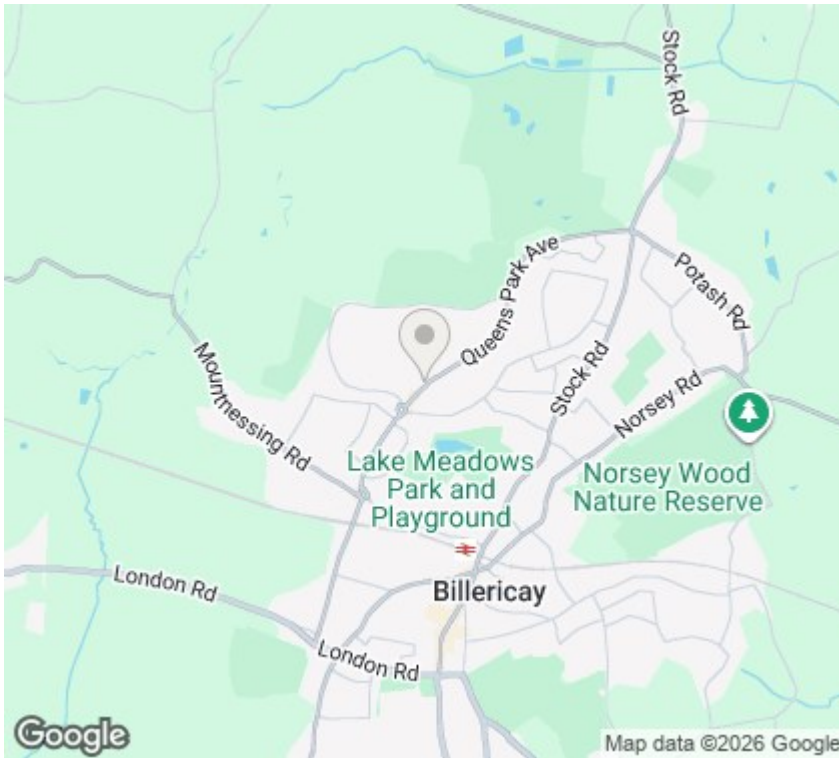




12 Park Lodge, Queens Park Avenue, Billericay, CM12 0QH Asking Price £240,000

- Strictly Over 55s
- Two Bedrooms
- Kitchen
- Shower Room
- Range of Residents Facilities
- Ground Floor Apartment
- Garden Access
- 18'3 Lounge
- Warden Controlled
- No Onward Chain



Viewings

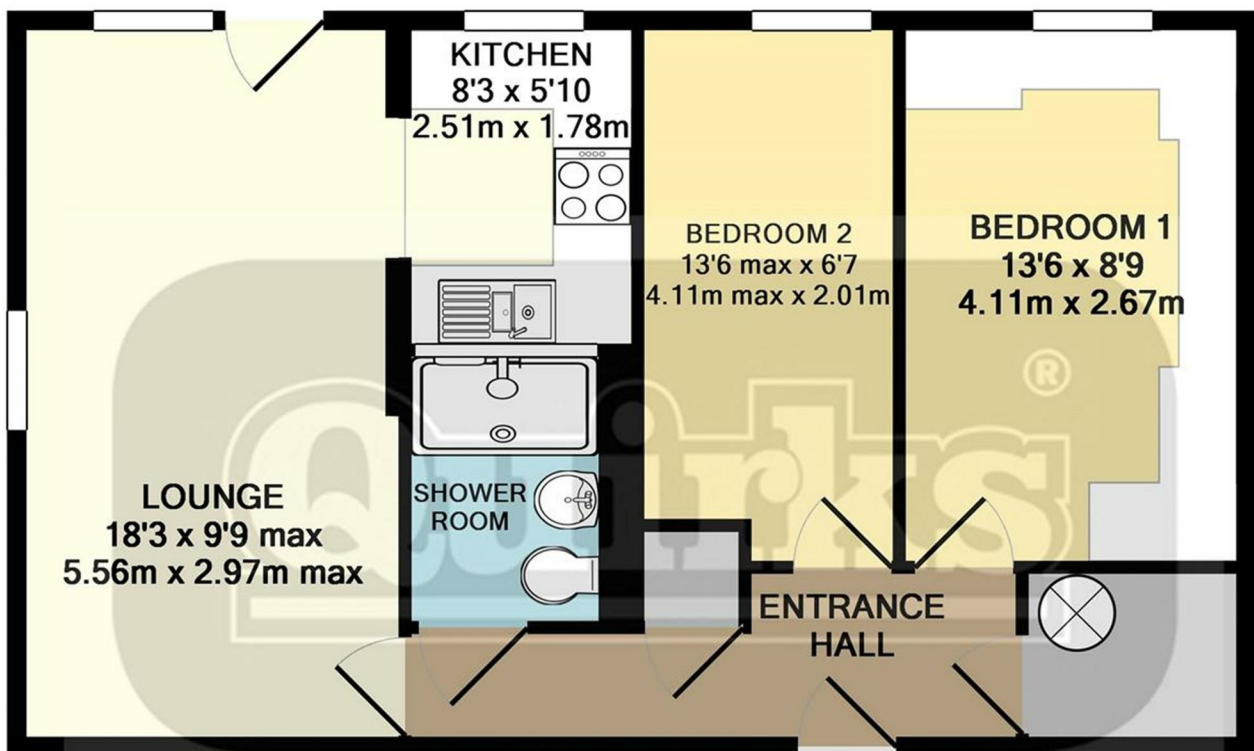
Viewings by arrangement only. Call 01277 626 541 to make an appointment.

Council Tax Band:

EPC Rating:

D

Energy Efficiency Rating		Current	Potential
Very energy efficient - lower running costs			
(92 plus)	A		
(81-91)	B		
(69-80)	C		
(55-68)	D	65	77
(39-54)	E		
(21-38)	F		
(1-20)	G		
Not energy efficient - higher running costs			
England & Wales		EU Directive 2002/91/EC	



TOTAL APPROX. FLOOR AREA 552 SQ.FT. (51.3 SQ.M.)

This floor plan is for illustrative purposes only. All representations including measurements, doors, windows and fixtures are approximate and NOT TO SCALE. The total floor area includes all floor space associated with the property including garages and outbuildings as depicted. No appliances or services are confirmed as included or tested.
Made with Metropix ©2018